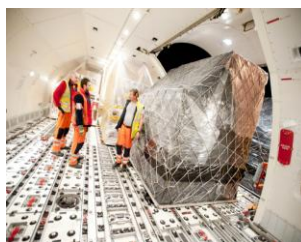


# Brussels Airport: your cargo gateway to Europe

Brucargo Special June 2016



## Logistics Hub of Europe

Brussels Airport is the second largest economic engine of Belgium and a major international hub for air freight. Through its unique central location between all major industrial centers and fast access to major purchasing power regions in Europe, Brussels Airport is very attractive to freight flows with short delivery times and / or high value.

Brucargo is very strong in the treatment of pharmaceutical and perishable goods and keeps working on new logistics concepts to improve the service. An example of this is the fact that Brussels Airport was the first airport in the world community which received the IATA CEIV certification for the handling and transport of pharmaceutical goods.

The world is changing rapidly: the world economy continues to globalize, integrated supply chains - and thus integrators - growing rapidly, e-commerce continues to boom, etc. That's why the air freight sector must adapt quickly to provide the appropriate response.

### Facts & Figures:

- Awarded Best cargo Airport in the world, third year in a row, by ACW!
- Best European Airport – Industry Choice Award – Payload Asia
- 5.000 direct jobs and 10.000 indirect jobs
- 489.000 ton flown cargo: 1/3 full freighters, 1/3 bellycargo, 1/3 express
- 100 forwarders operate at BRUcargo
- 226 direct connections from Brussels Airport
- 77 airlines operate at Brussels Airport
- 4 new full cargo airlines in 2015
- 7,8% growth in cargo volumes
- First IATA CEIV Pharma Certified Airport community in the world!

*"With an investment of 114 million euros in a brand new HUB (Q2 2017), BRU HUB perpetuates and reinforces its position as the 5th most important hub within the international network of DHL Express. With current growth rates the investment will create, by 2020, 200 additional direct and 200 additional indirect jobs." - Koen Gouweloose, Managing Director DHL*

*"Flanders is the logistical hub of Western Europe, which we largely owe to our airports - with at the frontline Brussels Airport. The major European cities and 60% of the purchasing power of the European Union are in a radius of 500 kilometers around Flanders. We may have little merit, to our central location, nevertheless, we have earned all of our strengths ourselves. We excel in and with motivated and well-trained workforces. We offer flexibility and creativity. We guarantee quality service and a helping hand. As Flemish Minister for Mobility and a resident of the province of Flemish Brabant. I am proud of the airport in Zaventem: an economic artery for our country. As Flemish Minister for Tourism, I am pleased that lots of foreign visitors arrive in Flanders via Brussels Airport. This airport is one of our best business cards." - Minister Weyts - Flemish Minister for Mobility and Public Works*

*"With 490,000 tonnes of cargo handled every year, Brucargo - the air cargo hub at Brussels Airport - plays an important role in international logistics and in the success of specific industries including the pharma industry.*

*Due to several innovations Brussels Airport has internationally grown into the Brussels Airport was the first airport to receive an IATA certification for the transport of temperature sensitive goods for all of the companies involved in the cold chain. The airport developed a new type of cool transport and an online platform on which all companies can share relevant data.*



*As economic power house in the heart of Europe, Brussels Airport more than ever focuses on customer intimacy, service and accessibility. Customer requests are met with the best possible solution. Brussels Airport constantly invests in the infrastructure and the innovation of its service at Brucargo to remain the ideal logistics gateway for all types of transport." - Arnaud Feist, CEO Brussels Airport Company*

# Brussels Airport: your cargo gateway to Europe

Brucargo Special June 2016



*"At Brussels Airlines Cargo we are committed to provide air transportation solutions. Therefore we have been working on providing quickly reliable alternatives following the terrorist attacks of March 22nd. The loyalty of our customers was the best token of appreciation we could dream of. Today we are back in Brussels and, strengthened, we are more than ever motivated to build together with our partners, the Brucargo of tomorrow: thanks to its central geographical position, it's road accessibility and the reliability of the different stakeholders in the chain, it is the ideal European gateway to and from the world. This said, just like before March 22nd, we will continue to invest in our destinations, products and services." – Alban Francois, Vice President Global Cargo, Brussels Airlines Cargo*

Brucargo provides complete solutions for companies and strives to be the most efficient and innovative airfreight logistics platform. The logistical needs of the manufacturing and distribution sector change quickly. Connectivity, speed, transparency and availability of data through the supply chain and a conditioned and specialized handling of goods is necessary.

Brussels Airport is an air cargo hub that offers solutions to all these needs. Yesterday, today and tomorrow!

At Brussels Airport we succeed. Even more, a new organization was set up in which all the players within the airfreight community will work together to continuously improve the service. Air Cargo Belgium brings together businesses, stakeholders and organizations in the cargo area of Brussels Airport and offers an answer to the need of an integrated supply chain approach.



*"The strategic sectors in Flanders such as the pharmaceutical or biotech greatly contribute to the creation of added value and employment. Thanks to sophisticated logistics concepts logistics costs for these companies can be reduced and we can strongly embed these strategic sectors. These businesses need conditioned, secure and fast transportation. And that is exactly where the air cargo community at Brussels Airport excels! The airport is also, along with our sea ports, a vital link in the logistics processes of many Flemish top companies." – Hans Maertens, CEO Voka, Flemish Network for Enterprises*

*"Brucargo is an important gateway for international trade and an important engine for economic growth, not only for airfreight but also for road transport. As a transport company, we face many challenges in the constantly changing economic world. The need to respond quickly to different conditions is becoming increasingly important. This requires agility in view and an innovative way of looking at the business world. Brucargo succeeds in answering these demands because of the intense cooperating between all stakeholders involved. Our experience in road transport, with a specialization on airfreight cargo, provides us the opportunity to be a part of the extensive Brucargo network." – Benny Smets, Director, Ninatrans*

*"Air France KLM Martinair Cargo has for many years been a big player on the Belgian market since it is ideally positioned between our two hubs Amsterdam and Paris. It is the 6th biggest country in Revenue for us worldwide. Belgian airfreight consists largely of Pharmaceutical shipments, which have high demand for temperature control during transport and also good follow-up, so also yield-wise that is interesting for us. Belgium is, and will always be, a very important market, where we will continue to play a big role." – Bas van Goch, Director Belgium/Luxembourg Air France KLM Martinair Cargo*